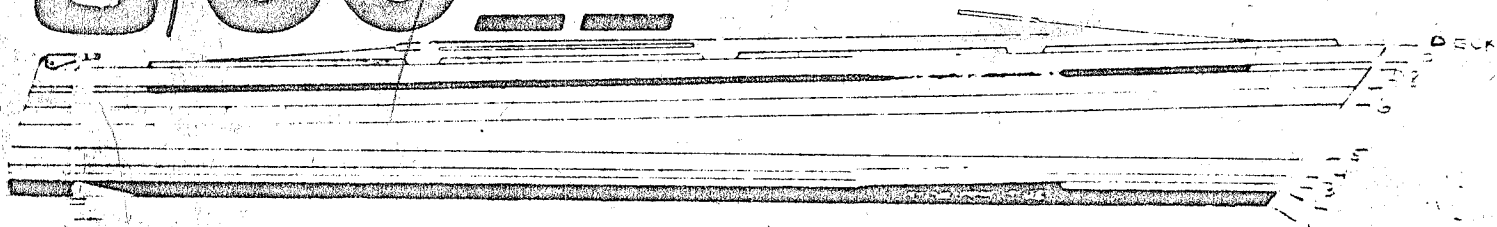


J/30

PRICE LIST

September 1, 1980



STANDARD EQUIPMENT

. \$36,900

Standard equipment includes spinnaker and genoa gear, six Barient winches, vang, backstay adjuster, cunningham, reefing tackle, halyard stoppers, double lifelines, bow pulpit, sternrail, starboard lifeline gate, headmate with holding tank and offshore discharge, manual bilge pump, 15 h.p. two cylinder Yanmar diesel with folding prop, stove, ice box, sink, three tinted hatches, six berths with 4" foam covered in woven nylon, nav lights, anchor well and skylight main hatch with sea hood. Sails, instruments and shipping cradle are not included as standard.

One deck color, one rudder color and two hull colors are standard. The hull may have (a) two waterline stripes (b) one waterline stripe and one sheer stripe (c) one hull band wider than 2½", or (d) contrasting color on topsides and bottom.

Graphic options are available. The lines shown on the above hull plan are inlaid in the mold. Lines are numbered from 1-9 from the water upward to the deck. The bottom paint shown above comes up to line 2. The cove stripe shown above is between lines 8 & 9. The cove stripe is 1". Rudder striping is an optional cost. There is a limit of three colors on any single part, whether hull, deck, or rudder.

There is no additional charge for using any of the 17 standard colors: White, Ivory, White Sand, Camel Brown, Gull Gray, Granada Gray, Black, Seafoam Green, Kelly Green, Lime Green, Mystic Blue, Biscayne Blue, Regatta Blue, Captain's Blue, Citron Yellow, International Orange, VIP Red and Bright Red.

OPTIONAL EQUIPMENT

| | | | |
|----------------------------------|-------|--|-------|
| Two-tone Deck | \$250 | Solid Teak & Holly Cabinsole | \$810 |
| Cabinside Accent Color. | 150 | Quarterberth Opening Port. | 90 |
| Additional Hull Stripes . . .ea. | 100 | Ritchie SSB60 Compasses.ea. | 145 |
| Bandsea. | 250 | Plath Mercur VZ Compasses.ea. | 230 |
| 3rd Color on Deck or Hull . .ea. | 150 | Companionway Dodger. | 440 |
| Rudder Stripes or Bands . . .ea. | 25 | Cockpit Cushions (white vinyl) | 170 |
| 3rd Rudder Color. | 50 | Main Cabin Drop Leaf Table | 400 |
| Teak Cockpit Backrest. | 525 | Shower, H&C Pressure, extra tank . . . | 800* |
| Shipping Cradle | 325 | *Must Include 110V Shore Power . . . | 360 |
| V-Berth Filler. | 50 | Or, Fresh Water Engine Cooling. . . . | 420 |
| | | Pressure Cold Water Only. | 430 |

DEALER OPTIONS: Include instruments, sails, safety equipment, radios, trailer, name graphics, freight and commissioning, and bottom paint.

TERMS: Prices are FOB Fall River, MA. All prices and specifications are subject to change without prior notice or obligation.