



2014 J/30 SNE Region Open Regatta
July 19 & 20, 2014
Bristol, Rhode Island



SAILING INSTRUCTIONS

J/30 Southern New England District is the Organizing Authority
Bristol Yacht Club is the Host

1. RULES

The regatta will be governed by the rules as defined in *The Racing Rules of Sailing* and by the required liability waiver.

2. NOTICES TO COMPETITORS

Notices to competitors will be posted on the official notice board at the Bristol Yacht Club.

3. CHANGES TO THE SAILING INSTRUCTIONS

Any change to the sailing instructions will be posted by 0900 on the day it takes effect, except that any change to the schedule of races will be posted by 2000 the night before it takes effect.

4. SIGNALS MADE ASHORE

4.1. Signals made ashore will be flown from the main flagpole at the Bristol Yacht Club.

4.2. When AP is flown ashore, "1 minute" is replaced with "not less than 60 minutes." This changes Race Signals AP.

5. SCHEDULE OF RACES

5.1. The scheduled time of the warning signal for the first race each day is 1100.

5.2. After the first race of the day, to alert boats that a race will begin soon the race committee will make repetitive sounds and an announcement by VHF.

5.2. Flag A displayed with no sound while boats are finishing means "No more racing today."

5.3. On the last day of the regatta no warning signal will be made after 1530.

6. CLASS FLAG

The class flag will be the J/30 class flag.

7. RACING AREAS

Appendix 1 shows the location of the race rendezvous and approximate race location.

8. CHECK IN

Each boat shall check in by sailing by the race committee signal boat and hailing her sail number until acknowledged.

9. THE COURSES

9.1. The diagrams in Appendix 2 show the courses, including the approximate angles between legs, the order in which marks are to be passed, and the side on which each mark is to be left.

9.2. No later than the warning signal, the race committee signal boat will display the course number, the approximate compass bearing and the distance to the first mark.

10. MARKS

10.1. Original marks will be orange inflatables.

10.2. The offset mark will be a small inflatable.

10.3. The start/finish mark will be a yellow inflatable.

10.4. Change marks used in conjunction with rule 33 and instruction 12.1 will be yellow inflatables.

11. THE START

The starting line will be between a staff displaying an orange flag on the race committee signal boat and the course side of the nearby mark, or a staff displaying an orange flag on the pin-end boat.

12. CHANGE OF THE NEXT LEG OF THE COURSE

To change the next leg of the course, the race committee will lay a new mark (or move the finishing line) and remove the old mark as soon as practicable. When in a subsequent change a new mark is replaced, it will be replaced by an original mark.

13. THE FINISH

The finishing line will be between a staff displaying an orange flag on the race committee signal boat and the course side of the nearby mark.

14. PENALTIES AT THE TIME OF THE INCIDENT

The first two sentences of rule 44.1 are changed to: "A boat may take a One-Turn Penalty when she may have broken a *rule* of Part 2 or rule 31 while racing. However, when she may have broken a *rule* of Part 2 while racing in the *zone* around a mark other than a starting mark, her penalty shall be a Two-Turns Penalty."

15. PROTESTS and REQUESTS FOR REDRESS

- 15.1. Appendix T 2.1 and T 2.2 apply.
- 15.2. Appendix T 5 (arbitration) applies.
- 15.3. The time limit for filing protests is one hour after the race committee signal boat docks. The protest time limit will be posted on the notice board.
- 15.4. Protest and penalty acceptance forms will be available at the bar in the Bristol Yacht Club. Protests and requests for redress and/or penalty acceptance forms as required by rule T2 shall be filed there within the appropriate time limit.
- 15.5. On the last scheduled day of racing a request for redress based on a protest committee decision shall be delivered no later than 30 minutes after the decision was posted. This changes rule 62.2.

16. SCORING

- 16.1. One race is required to be completed to constitute a series.
- 16.2. When fewer than five races have been completed, a boat's series score will be the total of her race scores.
- 16.3. When five or more races have been completed, a boat's series score will be the total of her race score excluding her worst score.

17. SAFETY

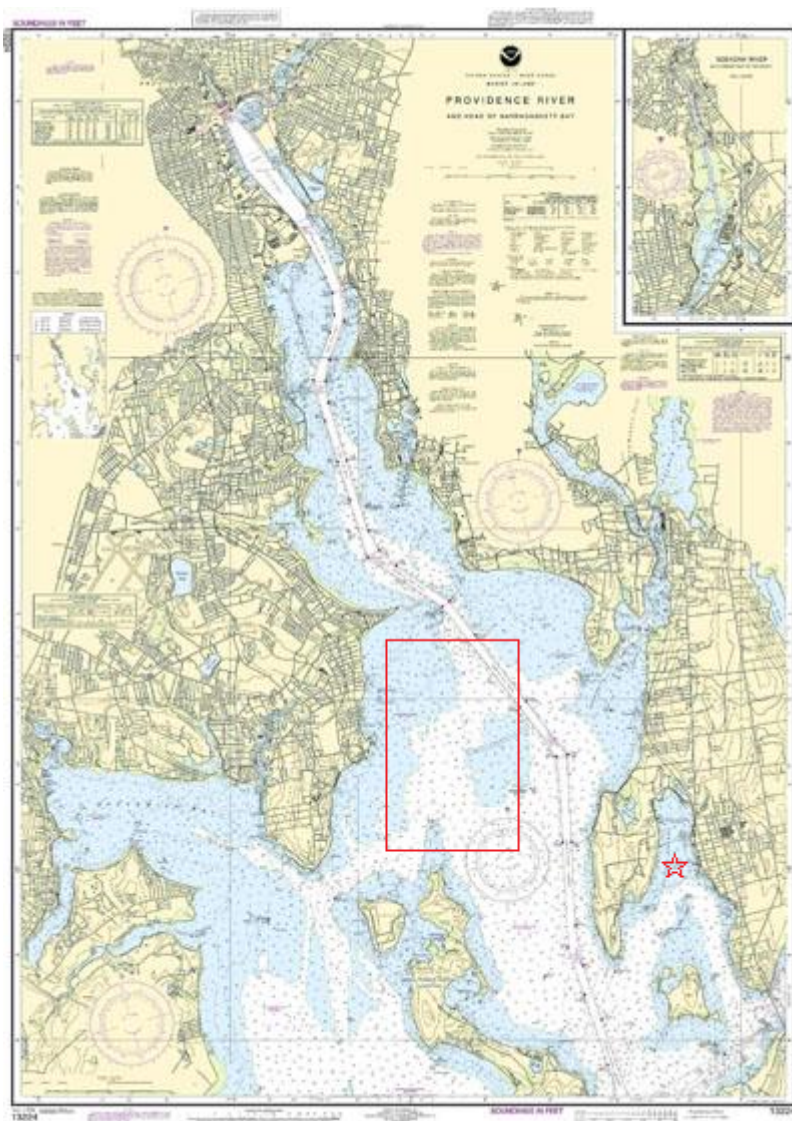
- 17.1. A boat that retires from a race shall notify the race committee as soon as possible.
- 17.2. The RC VHF channel will be announced at the skippers' briefing and initially posted each day on the signal boat.
- 17.3. Competitors are reminded that Narragansett Bay contains restricted and deep-draft navigation channels and that sailing vessels do not have right of way over vessels under power that may be restricted in their ability to maneuver. Participation in this regatta does not provide standing over vessels that have right-of-way.

18. DISCLAIMER OF LIABILITY and MEDIA RELEASE

- 18.1. Competitors participate in the regatta entirely at their own risk. See rule 4, Decision to Race. The organizing authority, committee and volunteers will not accept any liability for material damage, personal injury or death sustained in conjunction with or prior to, during, or after the regatta. A waiver of liability shall be signed by all competitors and shall be considered one of the documents governing the regatta.
- 18.2. Competitors and crew members on competing boats hereby grant to the J/30 Class Association and the Bristol Yacht Club in perpetuity, at no cost, the absolute right and permission to use their name, voice, image, likeness, biographical material and representations of their boats in any media world-wide (television, print, and internet media), including video footage, for the sole purposes of advertising, promoting, reporting and disseminating information regarding this event and the competitors and crew members participating in it.

Appendix 1
Course Area
J/30 SNE Region Open Regatta

The course area (in the red rectangle) is located in the vicinity of Ohio Ledge, north of Prudence and Patience Islands and west of the Providence shipping channel. The red star indicates Bristol Harbor and the approximate location of Bristol Yacht Club.

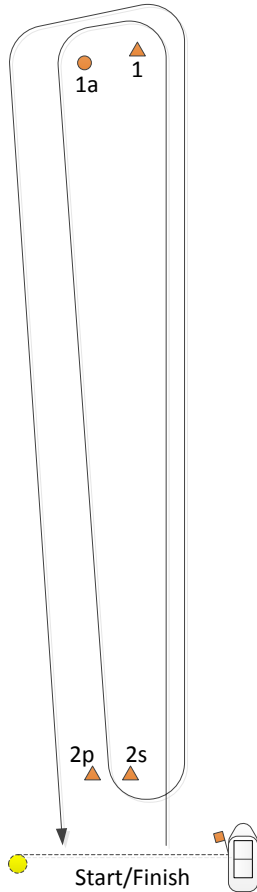


Appendix 2

Course Diagram

J/30 SNE Region Open Regatta

Even number of legs:



Course 2:

Start -1-1a -
Finish (Downwind)

Course 3:

Start -1-1a - 2p/s -
Finish (Upwind)

Course 4:

Start -1-1a - 2p/s -1-1a -
Finish (Downwind)

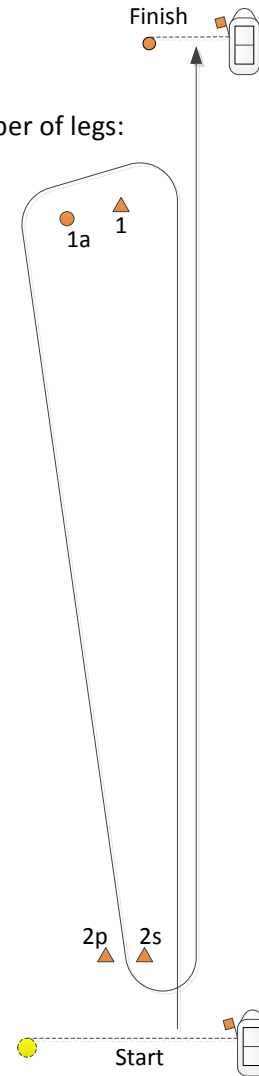
Course 5:

Start -1-1a - 2p/s -1-1a -
2p/s - Finish (Upwind)

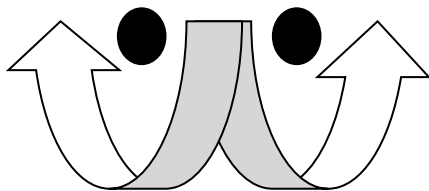
Course 6:

Start -1-1a - 2p/s -1 -1a
- 2p/s -1-1a -
Finish (Downwind)

Odd number of legs:



GATE (if set)



NOTE: At the gate, boats must pass between the two marks of the gate from the direction of the previous mark and leave the port gate to port or the starboard gate to starboard.

NOTES

- Marks 1 and 1a shall be rounded to port. Mark 1a is an offset mark and will be positioned to port of mark 1.
- Except when there is a change of course, the leeward gate will be positioned approximately to windward of the starting line.
- If only one mark of the gate is present, it shall be rounded to port.
- For courses with downwind finishes: the gate is not a mark of the course for the first or the finishing leg.
- For upwind finishes: the finish mark will be to windward of mark 1, unless a change is signaled for the finishing leg.